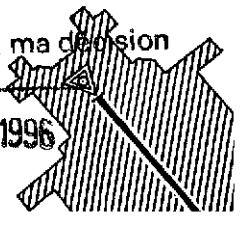


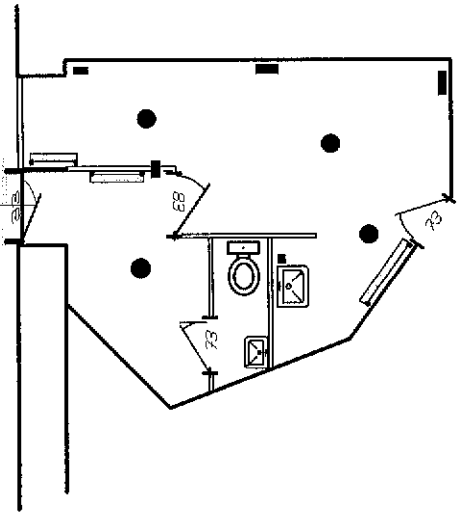
SECT



VU pour être annexé à ma décision
 en date du

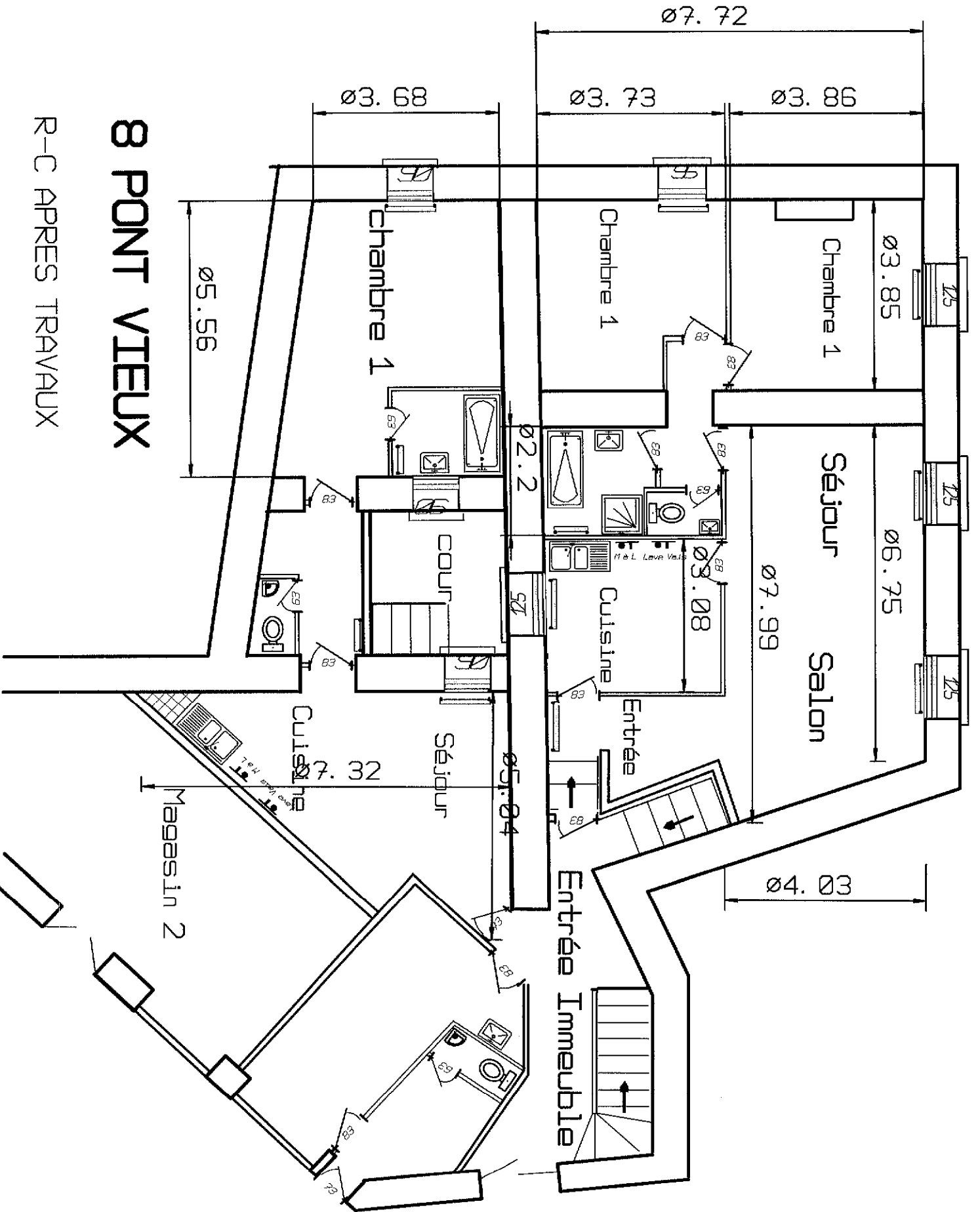
15 OCT. 1996





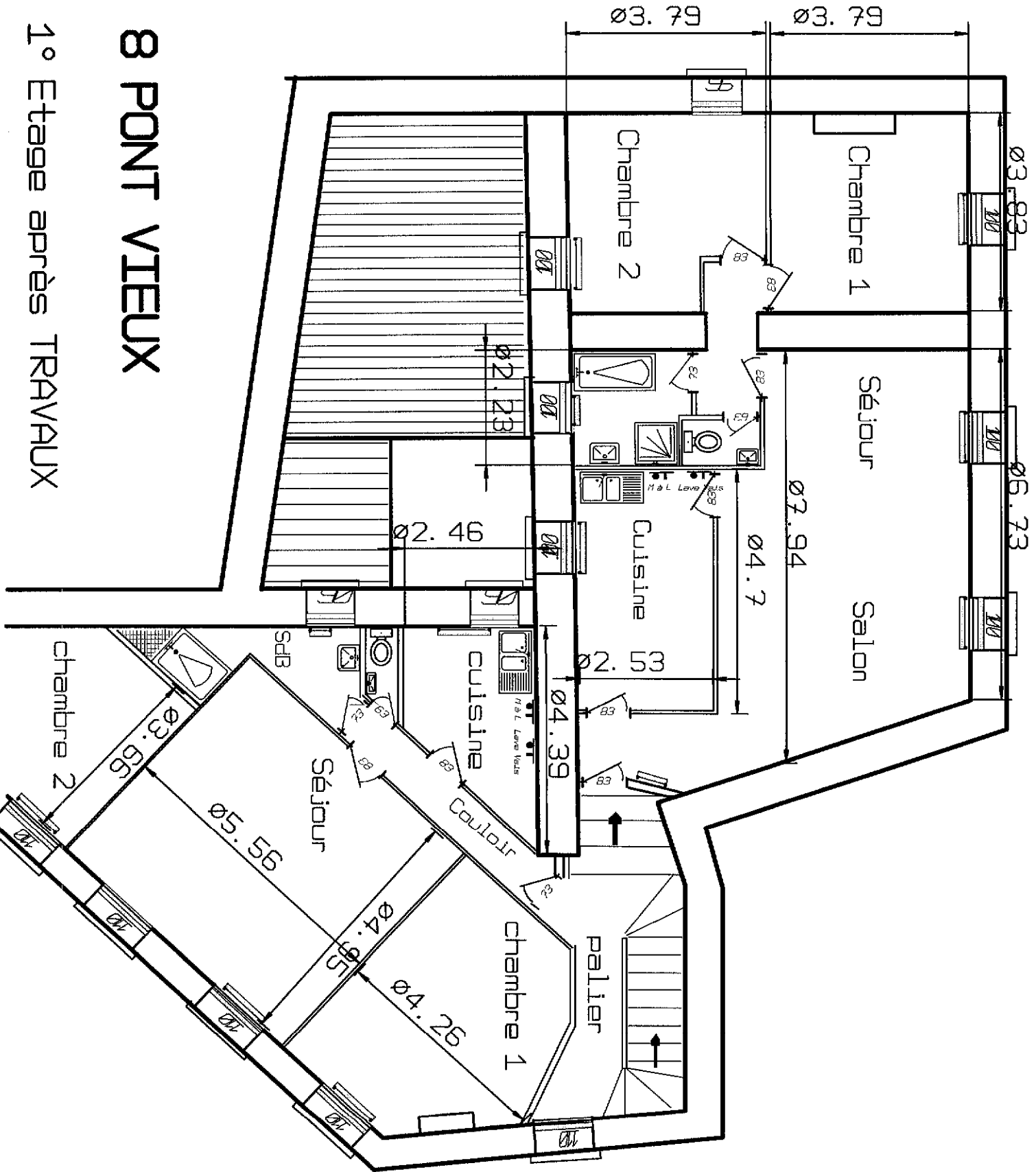
8me du Port View - 8TH FLOOR

Relit Magazine R-C



8 PONT VIEUX

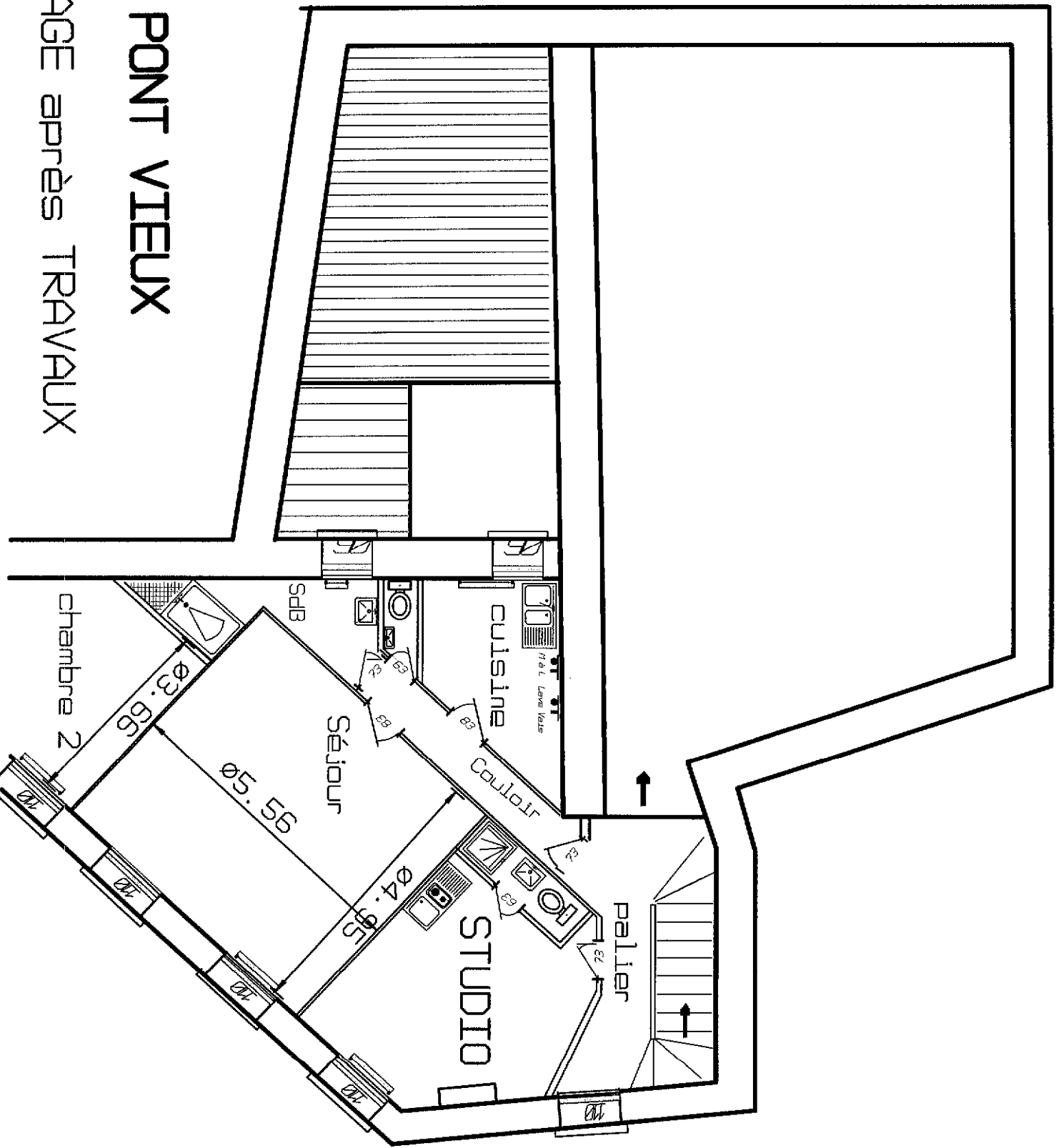
R-C APRES TRAVAUX



8 PONT VIEUX

1° Etage après TRAVAUX

1° Etage avant TRAVAUX



8 PONT VIEUX

2° ETAGE après TRAVAUX

8 PONT VIEUX

3° ETAGE APRES TRAVAUX

